

# The Climate Connection

---

## Partnering for a better future

### Who we are

The British Council builds connections, understanding and trust between the people in all four nations of the UK and countries worldwide. For 90 years, we have shaped brighter futures through education, arts, culture, language and creativity.

### How we address climate change

Our climate change strategy – the Climate Connection – sets out our priorities, which we will deliver through our global programmes and partnerships.

**We address climate change across three core sectors:**

- arts and culture
- education
- English language

### Our priorities

- **Strengthen** climate and sustainability education and research.
- **Build** the resilience of education systems to climate impacts.
- **Support** young people and future leaders to build their skills and knowledge in responding to climate change.
- **Protect** cultural heritage at risk from climate change.
- **Raise awareness** of climate change and biodiversity by supporting the arts and culture sector to develop creative responses and adopt more sustainable practices.
- **Be environmentally responsible** by reducing our carbon emissions by 33 per cent by 2026, from a 2017–18 baseline, and achieving net zero carbon emissions by 2040.
- **Share knowledge and best practice** by commissioning research and participating in the Conference of Parties (COP) and Conference of Youth (COY).





## Five reasons to partner with us

### An unrivalled global network

We have unparalleled access to young people, influencers and future leaders around the world.

### A trusted partner

We've worked with governments, international and local organisations delivering impact for 90 years.

### Value for money

We respond to local needs and contexts, making us sustainable and cost effective.

### Scale

We work with people in over 200 countries and territories. We reached 600 million people last year.

### Expertise

We bring a deep and thorough understanding of local contexts with our expertise in English, education systems and international cultural collaboration.

## Our highlights

Since 2020, our Climate Connection programme has directly engaged with 22 million people around the world and has connected with more than 7,500 partners.

### Climate and sustainability education

With our climate resources, training and partnership opportunities, teachers have inspired an estimated 3.4 million school students on climate topics.

We have helped more than 500 early-career researchers connect with the UK, improve their ability to work on climate-related solutions and expand their understanding of new disciplines and contexts.

### Young people and future climate leaders

Our social action training has supported young people around the world to deliver climate change projects to benefit their communities, reaching more than 114,000 people.

Our global Climate Skills programme is building an evidence base on the green skills that young people need to be part of a fair transition, and will train 12,000 young people across five countries.

### Artistic and cultural responses to climate change

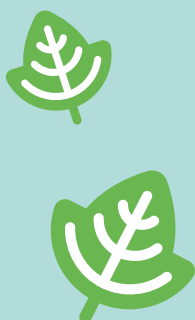
Our Cultural Protection Fund preserves heritage at risk from climate change. Since 2020, we have invested £6.7m in 33 projects in 12 countries protecting cultural heritage from the effects of climate change.

Our global Creative Commission grants have supported artists to gain new skills and develop exhibitions and collaborations around climate change. For many, this is the first time they have explored climate in their work.

### Environmentally responsible organisation

We have reduced our global carbon emissions by 47 per cent since 2017–18.

If you are interested in partnering or collaborating with us to address climate change with a focus on education, arts and culture, please get in touch: [climateconnection@britishcouncil.org](mailto:climateconnection@britishcouncil.org)



Download our climate change strategy